

MIKAS and NIKAS springs photo gallery

A U S T R A L I A
and
O C E A N I A

Australia



MIKAS – Piccaninnie Ponds



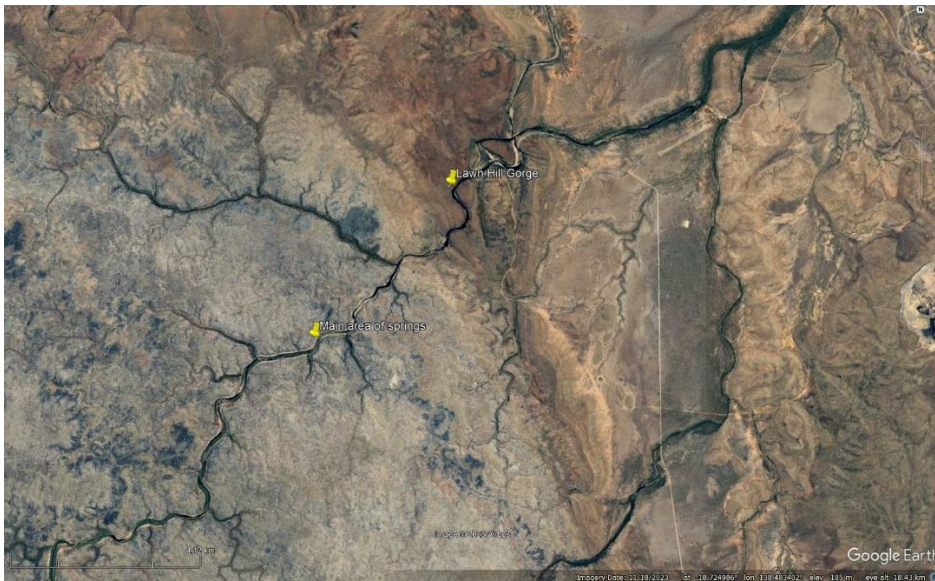
The Cathedral, western end of the Chasm, Piccaninnie Ponds. Photo Liz Rogers; published as Fig 14 in OBrien et al., 2023, Australian Cave Diving; In Webb J.A., White S.Q. and Smith, G.K., Australian Caves and Cave Systems, 9-28. Springer.

MIKAS – Junee Cave



Stream passage between first and second sump, Junee spring. Photo Ken Smith. Published as Fig. 3 in in OBrien et al., 2023, Australian Cave Diving; In Webb J.A., White S.Q. and Smith, G.K., Australian Caves and Cave Systems, 9-28. Springer.

MIKAS – Lawn Hill



Lawn Hill Creek, showing main area of springs and gorge cut through sandstone.



Lawn Hill gorge. Photo Winfried Weiss. Published as Fig. 15C in White et al., 2023, Northern Territory and Western Queensland; In Webb J.A., White S.Q. and Smith, G.K., Australian Caves and Cave Systems, 123-147. Springer.



Indarri Falls (tufa dam) within Lawn Hill gorge. Photo Hank Coppus. Published as Fig. 15A in White et al., 2023, Northern Territory and Western Queensland; In Webb J.A., White S.Q. and Smith, G.K., Australian Caves and Cave Systems, 123-147. Springer.

MIKAS – Mataranka springs (Korran (Bitter) spring)



Aerial Image of Korran (Bitter) Spring. Image source: Tourism Australia



Korran (Bitter Spring).



Tufa dam along Eley Creek (East of Bitter Spring); formed at a time when groundwater discharge was greater than today [Image from: 8]

NIKAS - Blue Waterhole



View downstream from the Blue Waterhole. Photo Garry K Smith



View across the Blue Waterhole. One of the resurgences is in the bottom of the waterhole. Photo Garry K Smith



View looking down Coleman Gorge below the Blue Waterhole. Photo Garry K. Smith

New Zealand



MIKAS - Waikoropupu



Aerial shot of Te Waikoropupu Springs taken in 2021. copyright by Bruce Hayward who gave Paul Williams permission to use it. The image shows the springs, the carpark for scale and at left the edge of a fish farm that uses some water from the springs outflow. Within the springs pool is the blue Main Spring at left and Dancing Sands Spring at right, their combined output being about 10 m³/s. The reddish colour is aquatic weed.



The artesian boil at the Main Spring (Photo by Paul Williams)