



Country	MIKAS springs	Coordinates / Nearby City	Spring discharge (Q in l/s,min/av/max) / tapped or not	Criteria* in order / Main justification */ H-historic, A-aesthetic, S-scientific, E-Economic, Ec-ecologic	Data collected by
Poland	1. Goryczkowe (Wywierzysko Goryczkowe)	N 49°15'15`` E 19°58'21`` Z = 1200 m asl Zakopane	166/800/>1000 Not tapped, but water is used downstream for different purposes	S, Ec, E, H, A <i>Water from this spring is characterized by the best parameters of biological purity in Poland. Many studies and expertise have been conducted in its catchment, stationary hydrogeological and hydrological observations have been carried out since 1980. The source has been located within the Tatra National Park and is subject to all the rules of inanimate nature protection applicable in legally protected areas in Poland.</i>	Grzegorz Barczyk
	2. Zygmunt spring (Źródło Zygmunt)	N 50°41'15.96`` E19°24'44.57`` Z = 296 m asl Złoty Potok	15/62/118 Not tapped, but used downstream for the largest trout farm in Europe	S, H, A, Ec, E <i>The Zygmunt Spring is the initial spring of river Wiercica, ensures its baseflow and at the same time one of the largest and most spectacular spring on the biggest Karst Region in Poland - Cracow - Czestochowa Upland. The name is given in memory of the Polish poet Zygmunt Krasiński) with the adjacent Elżbieta Spring have an important historical and economic significance. 1 km downstream breeding ponds were founded in 1881 and were the largest trout farm in continental Europe. The farm had 22 ponds with an area of 13.2 ha. The spring is characterized by high biodiversity, 11 species of flora were found in the spring niche.</i>	Dorota Okoń

MIKAS - Goryczkowe (Wywierzysko Goryczkowe)



Outflow from the Kasprowa Niżna Cave during a high water level of the massif (flood), an example of a "safety valve" type reaction for the circulatory system of Wywierzysko Goryczkowe, 1999 (Photo by Grzegorz Barczyk)

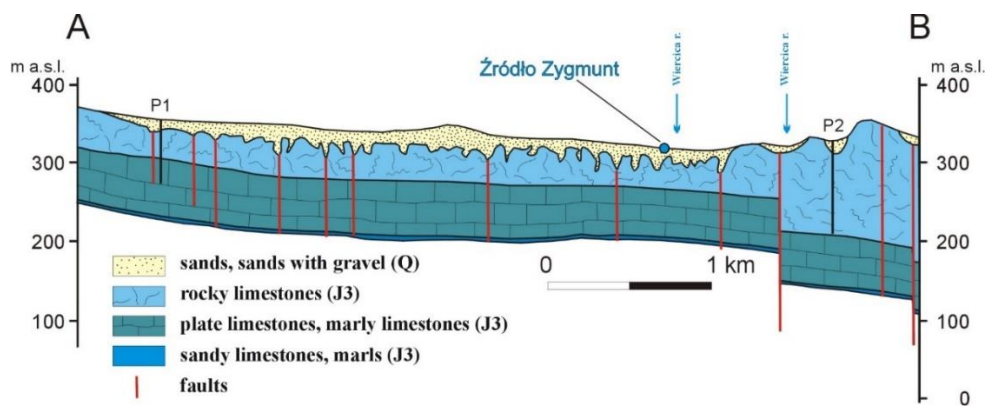
MIKAS – Zygmunt spring (Źródło Zygmunt)



Zygmunt Spring (Photo by P. Kokoszka)



Photo of the contemporary Trout House (Photo by P. Kokoszka)



Geological cross – section with the location of the spring (after R. Więckowski, 1973)